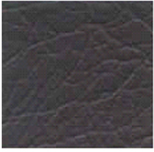


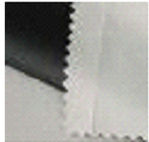
Fabrics & Colors

Colors vary from electronic color pictured, below options maybe lighter or darker on material. Suppliers may discontinue colors at any time, we do not guarantee exact color matches.



Expanded Vinyl:

Expanded-able fabric with vinyl coating and leather-like grain. Easy to clean. Most commonly used in zipper wallets. *Fabric can be silk-screen imprinted.*



Laminated Nylon:

3-ply construction of 70-denier fabric coated with waterproof polyvinyl and cotton twill backing. Provides greater strength and is more puncture resistant than standard nylon. Fabric used in all bag styles. *Fabric can be silk-screen imprinted or embroidered.*



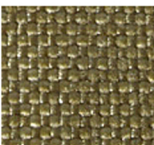
200 Denier Nylon:

200-denier fabric with waterproof polyvinyl coating is extremely lightweight, yet sturdy. Most commonly used for transit bags. *Fabric can be silk-screen imprinted.*



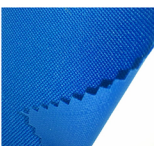
Canvas:

Available in 10 oz and 14 oz weight. Rugged cotton canvas is extremely durable. Its rigid construction is designed for everyday use. *Fabric used in all bag styles. Fabric can be silk-screen imprinted or embroidered.*



1000 Denier or Basket Weave Nylon:

A high performance fabric resistant to abrasions, tears, scuffs and punctures. 1000 Denier and Basket Weave Nylon is accepted standard for maximum durability, and has a water repellent urethane coating. *Fabric can be silk-screen imprinted or embroidered.*



600 x 300 Denier Polyester Cloth:

A very popular item with it's texturized yarns, and matching back. 600x300 Denier Polyester cloth is a medium-weight polyester fabric. This versatile material has a durable 0.55mm PVC backing, and it is commonly used for zipper wallet and transit bags. *Fabric can be silk-screen imprinted or embroidered.*

